

BDAS Botanic Artists



a)



b)



c)

Photographs of native orchids by Denis Wilson

a) Tallong midge orchid; b) Tallong midge greenhood; c) *Corunastylis plumosum* B

2016 Painting Days

Welcome back to 2016 to all our continuing members, and a very warm welcome to new members who have joined us this year.

Our last painting day for 2015 went well and included lots of Christmas cheer. Although I wasn't able to be there, I was enjoying a wonderful trip to Kangaroo Island instead.

2016 will be a busy year for us, as we have our exhibition and workshop events scheduled for October 26 to November 8 in the BDAS Gallery and studios.

The event is currently identified on the BDAS calendar as *Life Cycles of Plants*, although we may decide to amend this title slightly when we do the advertising.

The painting group will continue to meet twice a term throughout this year at BDAS in Studio 3, from 10am to 4pm. We are always very happy to welcome new members to the group. The studio hire fee will continue to vary slightly depending on the number attending each day, but it is usually about \$10 each person.

The dates for Terms 1 and 2 2016 are as follows:

February 29; March 14; April 11

May 23; June 20

All these are Mondays. The Terms 3 and 4 dates will be confirmed later in the year.

Some of our time on these days will need to be spent planning for the exhibition and workshops. So far we have discussed the financial arrangements and contributions from each group member, and made some initial

suggestions about advertising. These matters will be confirmed in the next few weeks. Margaret Botticchio has kindly offered to coordinate the finances and Cathy Coutts will look after the advertising.

The availability of two outstanding local tutors – Elaine Musgrave and Susannah Blaxill has been confirmed. Both have very kindly agreed to conduct workshops during the exhibition.

Field Trips and Excursions

Our group was invited to visit a private garden in Mittagong this year. We had hoped to visit in March, but were unable to find a suitable date, so we'll wait until spring when lots of plants are in flower. I am sure people will enjoy seeing this lovely garden.

Exhibitions of Interest – Past & Present

In January this year I visited Hobart to see the *Character of the Blossom*, exhibition at the Allport Library and Museum of Fine Arts. The Museum is in the State Library building.

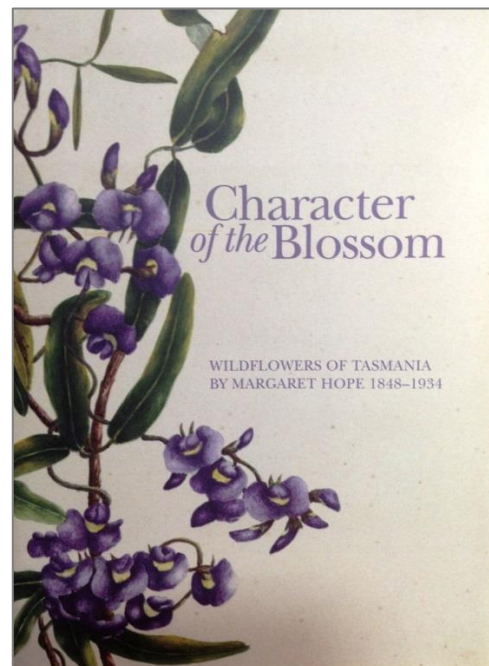
Paintings by the 19th century Tasmanian botanic artist, Margaret Anderson Hope were on exhibition. In the 1880's she assembled a large folio of watercolours for a publication called *Wildflowers of Tasmania*. The folio remained in private collections until its acquisition by the Allport Museum in 2014, and was finally published in a limited edition book.

I was fortunate enough to purchase a copy. The exhibition was fascinating to see and I was very impressed with the artist's single-minded dedication to producing the beautiful paintings in the collection. Copies of the book can be

purchased by contacting the Allport Library and Museum of Fine Arts.



Margaret Anderson Hope



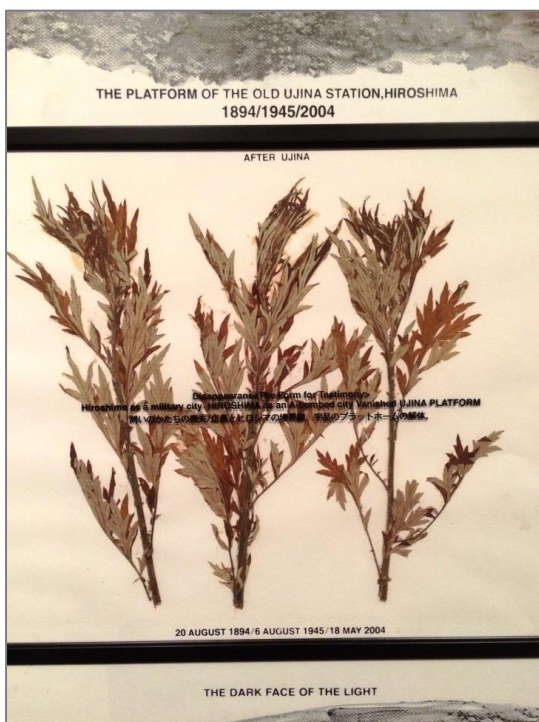
Character of the Blossom exhibition catalogue

MONA

While in Hobart, for something completely different, I also visited the **Museum of Old and New Art (MONA)**. For those who have not been

there, this is a place that will challenge your imagination and expand your mind about art in its many forms.

For those interested in botanic art and natural history, I have included here two works which I found fascinating and apologise for omitting the names of both artists. The first is by an artist who has collected plants growing at Hiroshima after the bomb.

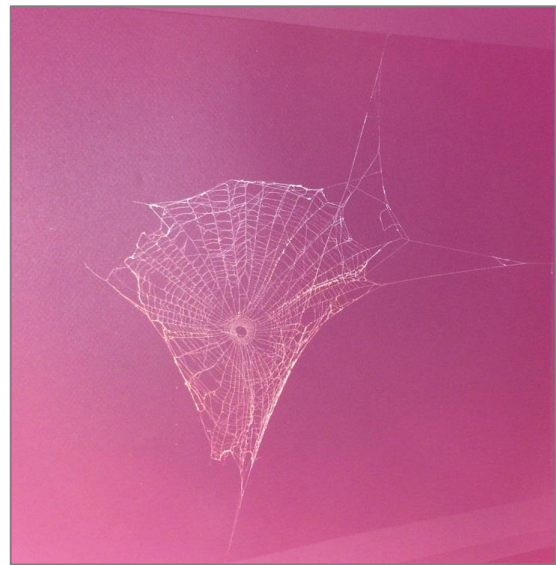


Hiroshima - plants growing at bomb site

The second is by an artist who photographs spider webs after she has spray painted them, to make their pattern and structure more visible.

Are these works botanic art? Most people would probably answer no, not in the traditional sense. They can, nevertheless, encourage us to

think about the images we make of plants and natural forms, and what meanings they convey.



Spider web painted and photographed

Lloyd Rees – Painting with Pencil

Museum of Sydney, to April 17, 2016

This exhibition showcases Lloyd Rees' magnificent drawings of Sydney and its environs. The sensitivity and skill with a pencil that he displays are second to none. For those who enjoy drawing as an art form in itself this exhibition is a 'must see', before it closes in a couple of weeks. I have included a picture of his Port Jackson Fig drawing on the next page.

BDAS Members Exhibition 2016

Congratulations to our member Jane Pye for her beautiful banksia painting in the BDAS members' exhibition held earlier this year.

Congratulations also to Susannah Blaxill, local botanic artist and teacher whose classes many of us have attended and enjoyed. Susannah's magnificent charcoal drawing won the

Australian Plant Society - Southern Highlands group art prize for an image of a native plant, as part of the BDAS members' exhibition.



Banksia serrata

Banksia serrata by Jane Pye



Banksia by Susannah Blaxill

Upcoming Exhibitions

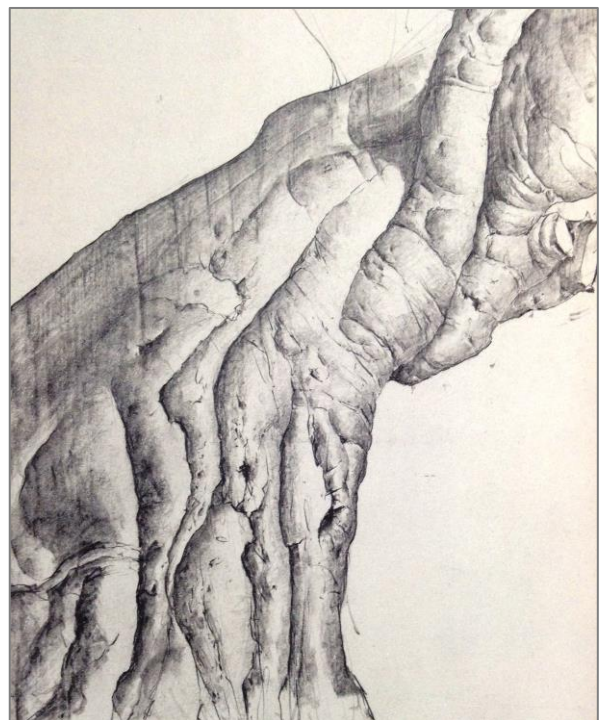
Margaret Flockton Award 2016

The Margaret Flockton Award is on exhibition again in the Maiden Theatre, Royal Botanic Gardens (RBG) Sydney from April 7 to May 1, 10am to 4pm daily.

Botanica at Farm Cove

The 2016 Botanica exhibition is also on, at the Lion Gate Lodge, RBG from April 7 to May 1, 10am to 4pm daily.

Denis Wilson update. Many of our members will remember the wonderful field trips around Robertson and Penrose we had a few years ago, with Denis Wilson as our guide. Denis has been unwell for the last year or so. I have included three of his wonderful photos of native orchids on the cover of this newsletter. We send him our best wishes.



Lloyd Rees - *Port Jackson Fig* pencil 1934

Newsletter prepared by Cathryn Coutts. Enquiries to:

cathryn.coutts@gmail.com